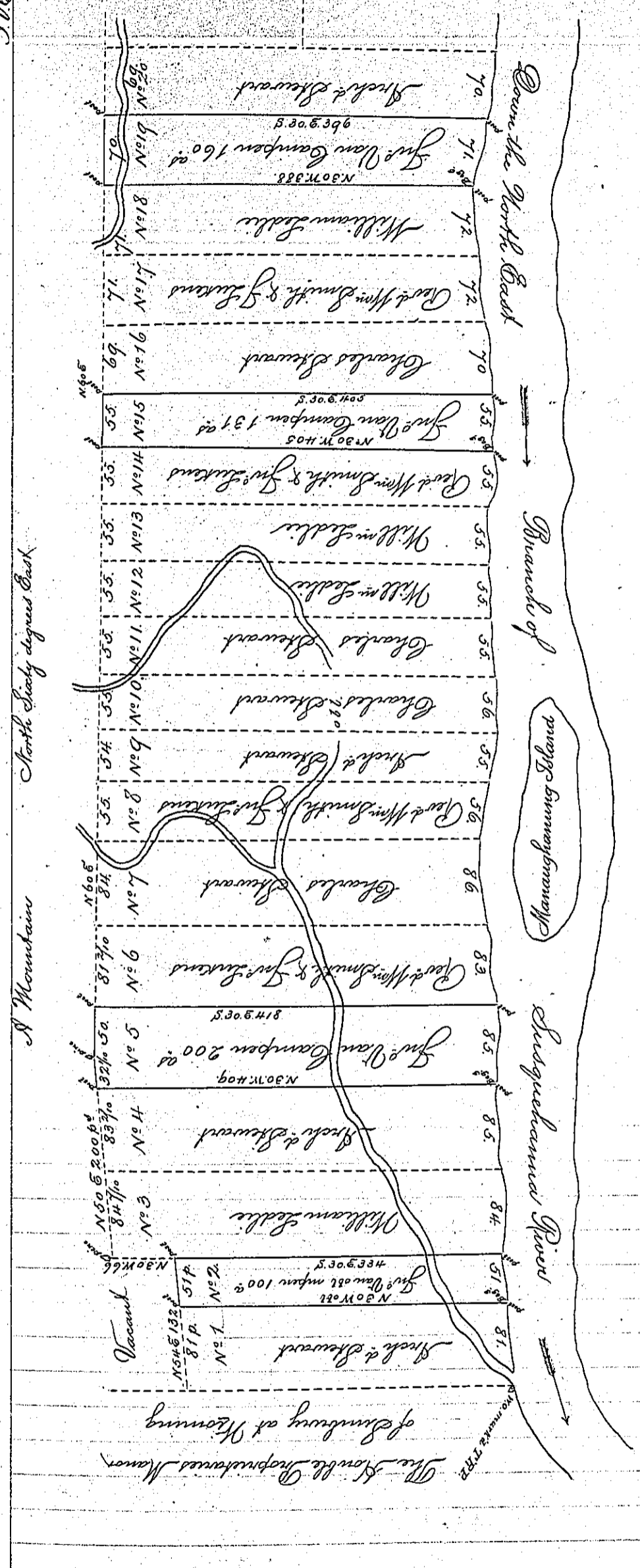


576



The Out Lines of the above Draught Represent the Survey of 30,98 Acres of Land called "Abrahams Plains" made for Andrew Allen Esq^r on his Special Application No 7 dated the 4th day of February 1769, Situate on the West side of the North East Branch of Susquehanna River adjoining the Conble the Proprietors Manor of Sumbury at Wyoming. Who by bearing date the _____ day of _____ 17 _____ Conveyed the same to Turbutt Francis Esq^r who obtained a patent for 2037 Acres and 96th thereof bearing date the 24th day of February 1774, and also one other patent for the remaining 1060 Acres and 64th bearing date on the 14th day of June 1774, and also to Convey the same to the above mentioned persons, according to the partition Lines laid down in the above Draught. To Wit, To John Van Campen No 2, Containing 100 Acres and Allowance of 1/3rd Cent for Roads. No 5, Containing 200 Acres & ca. No 15, Containing 131 Acres & ca. No 19 Containing 160 Acres and allowance.

No 1, 2, 3, 4, 5 are part of the 2037th 96th patent.
 And No 15, 19 are part of the 1060. 64th patent.

Drawn In the Surveyor Generals Office
 P. J. Lusk Esq

IN TESTIMONY that the above is a copy of the original remaining on file in the Department of Internal Affairs of Pennsylvania, made conformably to an Act of Assembly approved the 16th day of February, 1833, I have hereunto set my Hand and caused the Seal of said Department to be affixed at Harrisburg, this

fourth day of September 1890.

James W. Latta
 Secretary of Internal Affairs.

